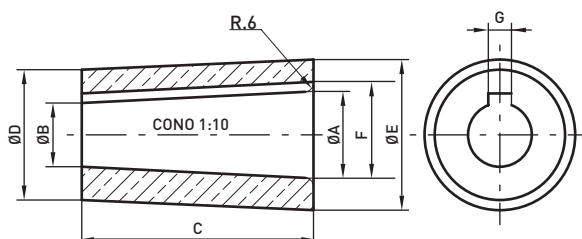
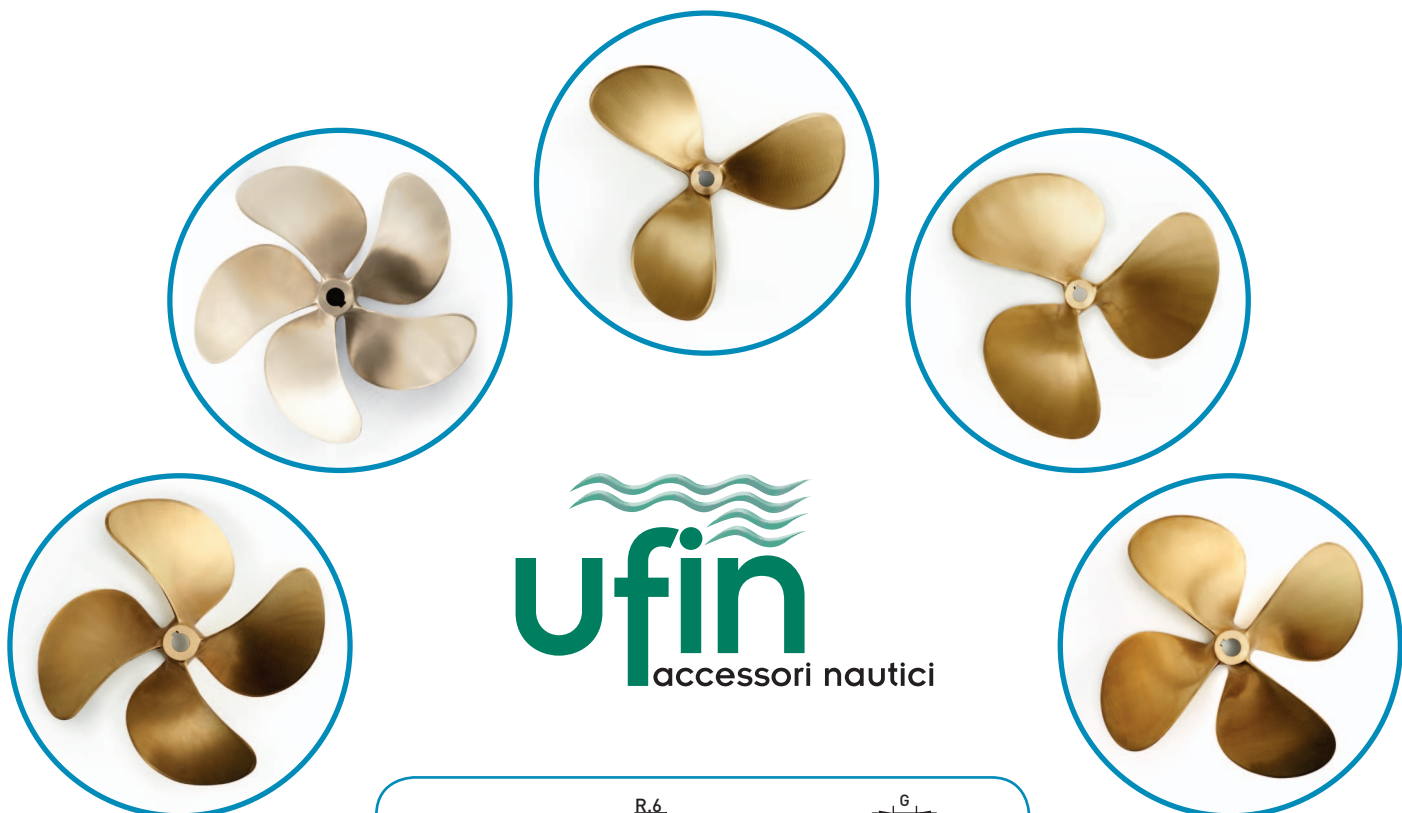


# Eliche per motori entro bordo

## Inboard propellers

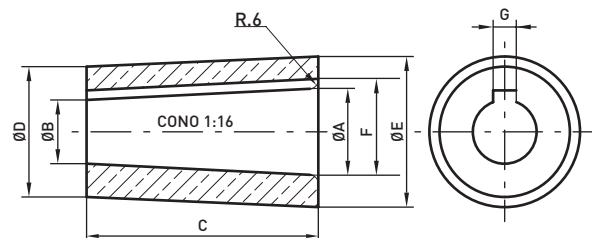
Eliche di produzione nazionale ed estera per motori entro bordo, la gamma completa comprende eliche a 2,3,4, e 5 pale per tutti i tipi di imbarcazione, dalla barca a vela allo scafo ad alte prestazioni, per velocità da 6 a 35 nodi e oltre. Le leghe utilizzate per la produzione sono OT.MAN. e NIBRAL. Eliche con misure in millimetri, conicità non standard o dimensioni extra tabella sono fornite su richiesta.

Inboard propellers from national and global manufacturers. The available range includes propellers with 2,3,4 and 5 blades for all boat types, from sailing yachts to planning hulls. We can supply propellers for vessel speeds from 6 to 35 knots and more. The bronze alloys used are OT.MAN. and NIBRAL. Propellers with metric measures, with tapers different from 1/10 are supplied on demand.



Dimensioni mozi eliche conicità 1/10 / Propellers hub dimensions 1/10 taper

DIAMETRO ASSE SHAFT DIAMETER	A mm	B mm	C mm	D mm	E mm	F mm	G mm
25	25	19	60	37	42	27,8	6
30	30	22	80	45	52	33,3	8
35	35	26	90	50	57	38,3	10
40	40	30	100	55	64	43,3	12
45	45	34	110	65	75	48,8	14
50	50	38	120	75	84	53,8	14
60	60	46	140	90	105	64,4	18
70	70	54	160	100	120	74,9	20
80	79,5	61,5	180	120	140	84,9	22
90	89,5	69,5	200	135	160	94,9	25
100	99	77	220	150	180	105,4	28
110	109	85	240	170	210	115,4	28
120	119	93	260	180	220	220	32



### Dimensioni mozi eliche conicità 1/16 / Propellers hub dimensions 1/16 taper

DIAMETRO ASSE SHAFT DIAMETER	A	B	C	D	E	F	G
3/4"	3/4"	0,61"	2" 1/4	1" 3/16	1" 3/8	27/32"	3/16"
7/8"	7/8"	0,71"	2" 5/8	1" 7/16	1" 1/2	1"	1/4"
1"	1"	0,81"	3"	1" 1/8	1" 5/8	1" 1/8	1/4"
1" 1/8	1" 1/8	0,91"	3" 3/8	1" 9/16	1" 3/4	1" 2/8	1/4"
1" 1/4	1" 1/4	1,01"	3" 3/4	1" 3/4	2" 1/16	1" 13/32	5/16"
1" 3/8	1" 3/8	1,11"	4" 1/8	2"	2" 1/4	1" 17/32	5/16"
1" 1/2	1" 1/2	1,22"	4" 1/2	2" 3/16	2" 1/2	1" 11/16	3/8"
1" 3/4	1" 3/4	1,42"	5" 1/4	2" 9/16	3"	1" 31/32	7/16"
2"	2"	1,62"	6"	3"	3" 5/16	2" 1/4	1/2"
2" 1/4	2" 1/4	1,82"	6" 3/4	3" 3/8	4"	2" 17/32	9/16"
2" 1/2	2" 1/2	2,03"	7" 1/2	3" 3/4	4" 1/2	2" 13/16	5/8"
2" 3/4	2" 3/4	2,23"	8" 1/4	4"	4" 3/4	3" 1/16	5/8"
3"	3"	2,43"	9"	4" 3/4	5" 1/2	3" 5/16	3/4"

## Eliche 2 pale 2 blades propellers

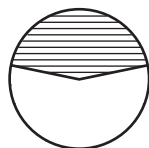


K235 AS/AD = 0,3432  
6-10 KN

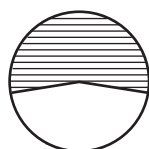
### Elica 2 pale K 235 (D.A.R. 35%) / 2 Blades propellers K 235 (D.A.R. 35%)

DIAMETRO DIAMETER	PASSO standard / standard PITCH	FORO max / max BORE
12"	8" - 10"	25 mm
13"	8" - 13"	25 mm
14"	8" - 14"	25 mm
15"	8" - 14"	25 mm
16"	8" - 15"	30 mm
17"	10" - 15"	30 mm
18"	10" - 15"	30 mm
19"	13" - 15"	35 mm
20"	13" - 15"	35 mm
21"	13" - 15"	35 mm

# Eliche 3 pale 3 blades propellers



E343 AS/AD = 0,4267  
6-10 KN



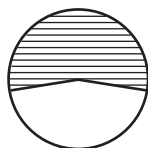
E352 AS/AD = 0,5150  
8-16 KN

## Elica 3 pale E 343 (D.A.R. 43%) / 3 Blades propellers E 343 (D.A.R. 43%)

DIAMETRO / DIAMETER	PASSO standard / standard PITCH	FORO max / max BORE
12"	8" - 10"	25 mm
13"	7" - 11"	25 mm
14"	7" - 12"	30 mm
15"	8" - 13"	30 mm
16"	9" - 14"	35 mm
17"	10" - 15"	35 mm
18"	11" - 16"	35 mm
19"	12" - 17"	40 mm
20"	13" - 18"	40 mm

## Elica 3 pale E 352 (D.A.R. 52%) / 3 Blades propellers E 352 (D.A.R. 52%)

DIAMETRO / DIAMETER	PASSO standard / standard PITCH	FORO max / max BORE
12"	8" - 11"	25 mm
13"	8" - 13"	30 mm
14"	8" - 14"	30 mm
15"	8" - 14"	35 mm
16"	9" - 16"	35 mm
17"	10" - 16"	35 mm
18"	10" - 16"	35 mm
19"	11" - 18"	40 mm
20"	11" - 18"	40 mm
21"	12" - 19"	40 mm
22"	12" - 19"	45 mm
23"	15" - 19"	45 mm
24"	15" - 19"	45 mm



C355 AS/AD = 0,5470  
17-30 KN



D375 AS/AD = 0,7500  
30-35 KN

### Elica 3 pale C 355 (D.A.R. 55%) / 3 Blades propellers C 355 (D.A.R. 55%)

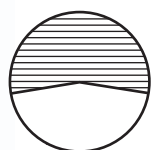
DIAMETRO / DIAMETER	PASSO standard / standard PITCH	FORO max / max BORE
13"	11" - 15"	30 mm
14"	11" - 17"	30 mm
15"	13" - 17"	30 mm
16"	14" - 20"	35 mm
17"	15" - 20"	35 mm
18"	15" - 21"	40 mm
19"	15" - 23"	40 mm
20"	16" - 23"	40 mm

### Elica 3 pale D 375 (D.A.R. 75%) / 3 Blades propellers D 375 (D.A.R. 75%)

DIAMETRO / DIAMETER	PASSO standard / standard PITCH	FORO max / max BORE
17"	17" - 20"	40 mm
18"	16" - 24"	40 mm
19"	19" - 26"	45 mm
20"	20" - 26"	45 mm
21"	21" - 24"	45 mm
22"	21" - 24"	45 mm
23"	21" - 24"	50 mm

# Eliche 4 pale

## 4 blades propellers



B6 AS/AD = 0,5689  
9-15 KN



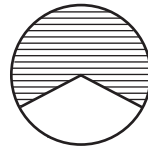
B7 AS/AD = 0,6861  
15-22 KN

### Elica 4 pale B 457 (D.A.R. 57%) / 4 Blades propellers B 457 (D.A.R. 57%)

DIAMETRO / DIAMETER	PASSO standard / standard PITCH	FORO max / max BORE
16"	13" - 15"	40 mm
17"	13" - 17"	40 mm
18"	13" - 17"	40 mm
19"	13" - 17"	40 mm

### Elica 4 pale B 469 (D.A.R. 69%) / 4 Blades propellers B 469 (D.A.R. 69%)

DIAMETRO / DIAMETER	PASSO standard / standard PITCH	FORO max / max BORE
16"	13" - 15"	40 mm
17"	13" - 18"	40 mm
18"	13" - 18"	45 mm
19"	15" - 19"	50 mm
20"	15" - 20"	50 mm
21"	16" - 20"	50 mm
22"	16" - 20"	50 mm
23"	18" - 20"	50 mm
24"	18" - 20"	50 mm



S8 AS/AD = 0,736  
18-30 KN



S8m AS/AD = 0,900  
25-35 KN

### Elica 4 pale S 474 (D.A.R. 74%) / 4 Blades propellers S 474 (D.A.R. 74%)

DIAMETRO / DIAMETER	PASSO standard / standard PITCH	FORO max / max BORE
16"	15" - 22"	35 mm
17"	15" - 24"	40 mm
18"	16" - 27"	40 mm
19"	16" - 27"	40 mm
20"	16" - 27"	40 mm
21"	18" - 30"	50 mm
22"	18" - 30"	50 mm
23"	20" - 32"	50 mm
24"	20" - 32"	50 mm

### Elica 4 pale S 485-490 (D.A.R. 85-90%) / 4 Blades propellers S 485-490 (D.A.R. 85-90%)

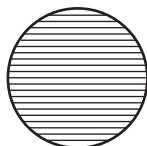
DIAMETRO / DIAMETER	PASSO standard / standard PITCH	FORO max / max BORE
16"	15" - 22"	35 mm
17"	15" - 24"	40 mm
18"	15" - 24"	40 mm
19"	22" - 26"	40 mm
20"	22" - 26"	50 mm
21"	22" - 27"	50 mm
22"	22" - 27"	50 mm
23"	26" - 33"	50 mm
24"	26" - 33"	50 mm

# Eliche 5 pale

## 5 blades propellers



S592 AS/AD = 0,92  
18-32 KN



S506 AS/AD = 1,06  
16-30 KN

### Elica 5 pale S 592 (D.A.R. 92%) / 5 Blades propellers S 592 (D.A.R. 92%)

DIAMETRO / DIAMETER	PASSO standard / standard PITCH	FORO max / max BORE
20"	18" - 28"	40 mm
21"	18" - 30"	50 mm
22"	20" - 32"	50 mm
23"	20" - 34"	50 mm
24"	20" - 34"	60 mm
25"	20" - 36"	60 mm
26"	22" - 38"	70 mm
27"	24" - 40"	70 mm
28"	26" - 42"	80 mm

### Elica 5 pale B 506 (D.A.R. 106%) / 5 Blades propellers S 506 (D.A.R. 106%)

DIAMETRO / DIAMETER	PASSO standard / standard PITCH	FORO max / max BORE
20"	18" - 28"	40 mm
21"	18" - 30"	50 mm
22"	20" - 32"	50 mm
23"	20" - 34"	60 mm
24"	24" - 34"	60 mm
25"	20" - 36"	70 mm
26"	22" - 38"	70 mm
27"	24" - 40"	70 mm
28"	26" - 42"	80 mm